

NEW

Point  **GUARD**

XTREME



MDI's **PointGuard X** was designed to give users the power and scalability of an IT centric enterprise-class access control solution, without the high costs, configuration time and extensive training commitments. **PointGuard X** software and hardware is easy to install and use, but does not limit the client to the "skinny" features of traditional small business access control packages.

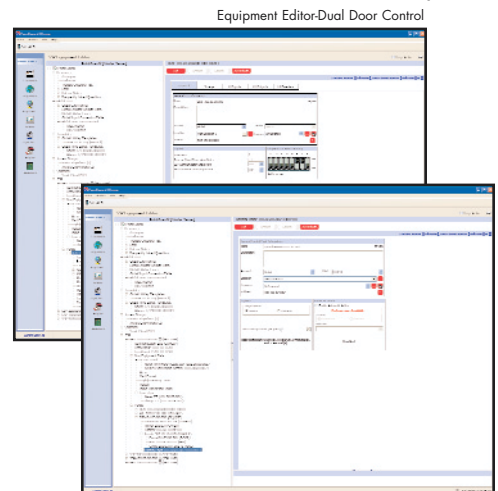
The **PointGuard X** integrated access control solution is built on a sophisticated enterprise open-architecture software platform with an accessible MSDE or SQL back end, that has been successfully protecting high-security government and blue-chip enterprise clients for over two decades.

Because **PointGuard X** is built on MDI's award-winning ONE™ Unified Technology™ Platform, its capabilities and future growth potential are virtually limitless. **PointGuard X's** unique value to the security industry comes from a fact that it was designed around specific requirements from dealers, installers and end users. The **PointGuard X** system delivers the greatest ease of installation and useability on the market.

PointGuard X allows you to monitor and restrict access to your business so that you can effectively limit risk, providing better protection for your critical assets, sensitive areas, and personnel.

An effective entry-level access control system should:

- Be able to expand easily and cost effectively as the need for additional control locations grow
- Be easy to install, providing a rapid return on its investment
- Offer an Xtreme range of usability, from the Receptionist, to the HR Department to the Security and Loss Prevention Manager
- Be capable of adding features and capabilities as the need for additional security measures grow
- Be able to deliver interactive color graphics with dynamic icons for map-based system control
- Offer Microsoft® type interactive device trees for real-time updating and control of field devices
- Include simple yet effective photo ID and badging capabilities
- Provide integration capabilities that match the most demanding enterprise platforms
- Be backward compatible with legacy hardware
- Be IP network centric and converge seamlessly with existing infrastructure



10226 San Pedro Ave., Ste. 200
 San Antonio, Texas 78216
 Tel: 210-477-5400
 Fax: 210-477-5401
 Toll-free: 866-435-7634
www.mdisecure.com

Features subject to change without notice.



With **PointGuard X** - small to mid-sized organizations can now take advantage of the same enterprise-grade integrated access control power offered by the world's largest integrators to the world's largest organizations, at a price point that fits the small business budget

Integrating features that are required in the most demanding access control applications, **PointGuard X** encompasses the usability required for the entry-level user, while providing system enhancement capabilities that deliver true value for emerging organizations, both now and in the future.

System Parameters

- 128 Controller connections to servers (LAN or Serial)
- 32 Field panels (maximum) per connection / 64 Readers (maximum) per connection
- 512 (maximum) Readers system wide
- 64 Elevator floors (maximum)
- 128 Cabs (maximum)

Field Hardware	Per Panel			MAX		
	Readers	Inputs	Outputs	Readers	Inputs	Outputs
Dual Door Interface Controller	2	8	8	512	2048	2048
Door Interface Controller	1	2	2	256	512	512
Alarm Interface Controller	0	16	2	0	4096	512
Relay Output Controller	0	2	16	0	512	4096

Windows Operating Systems:	2000, 2003, XP-Pro	Card Holders:	Unlimited in the Server Database, up to 25,000 in the access control panel NOTE: If the cardholder does not reside in the panel, PointGuard X will interrogate the database and download the cardholder's information to the field panel
Workstations:	Up to 32 Workstations	Multiple Card Formats:	Yes
Server Connections to Field Devices:	LAN (TCP/IP), (RS-232, RS-485 or Dial Up)	Access Groups:	Unlimited
Event On-Line Storage:	Unlimited (disk space storage dependent)	Security Areas:	1024
Event Archive Storage:	Unlimited (disk space storage dependent)	Access Groups/ Card:	1
Database:	MSDE, SQL Server	Anti-Passback:	Yes
Controller Connections per Server:	128	Mantrap/Turnstile:	Yes
Field Panels per Controller:	32	Biometrics:	Supports biometric readers and scanners
Field Panels per Server:	256	Photo ID Badging:	Yes
Readers per Controller:	64	Video Integration:	Yes - Optional
Max Readers:	512	Multiple Monitor Operation:	Yes
Event Buffer Size:	Up to 20,000 per controller	Sentinel Required:	No
Alarm Inputs:	4096	Reports:	Yes
Relay Outputs:	4096	Color Graphics Maps:	Unlimited
Time Zones:	64	Operator Password Groups:	8
Intervals per Time Zones:	12	Facility Codes:	Unlimited
Holidays:	255	Operator Passwords:	Unlimited
Access Levels per Cardholder:	32		
Pin Digits:	6		

Features subject to change without notice.



10226 San Pedro Ave., Ste. 200
 San Antonio, Texas 78216
 Tel: 210-477-5400
 Fax: 210-477-5401
 Toll-free: 866-435-7634
 www.mdisecure.com

Purchasing Information

MDI Security Systems offers a wide variety of purchasing options for government, institutional and commercial organizations across the globe. For immediate information on the best option to fit your specific needs, or to find a Regional Business Development Manager near you, please contact us at:

Email: sales@mdisecure.com Direct: 210-477-5400 Toll Free: 866-435-7634