

2.0 Megapixel IP Camera

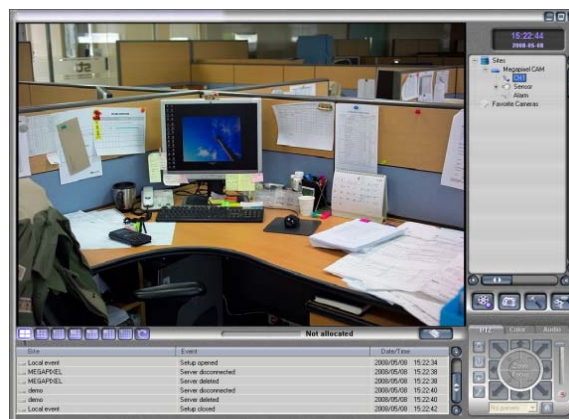


Image through True CMS

Features

- High quality of compression algorithm (H.264/MJPEG)
- 2.0 Megapixel 1/2.5" CMOS Image sensor
- Up to HD resolution (1928 x 1080) at 30fps
- High sensitivity JPEG image capture function
- 10/100M Ethernet network interface
- Sensor input terminals
- Alarm output terminals
- 1 channel audio in/out (mono, line in/out)
- Video bit rate : 32kbps ~ 8Mbps
- Serial data bandwidth : 2,400bps ~ 115,200bps
- Protocols : TCP/IP, Multicast, HTTP, SMTP, SNMP, FTP, DHCP, DNS, Dynamic DNS , RTP, RTSP
- Web-based viewer (Internet Explorer)
- True CMS : Up to 36 channels live monitoring, recording, search & playback
- HDMI Output (TCAM-530NH model)
- Composite Output (TCAM-530NC model)
- RS485 terminals

Optical LENS Specification

- Optical x10 zoom, Digital x10 zoom
- Lens : 1/3.6", f=4.5 ~45.0mm, F1.8~2.2
- Focus preset function
- Focus Range : Standard focusing distance 1.0m~∞ (Wide : 1cm~)
- Back Focal Length : 5.62mm
- Flange Back Length : 5.62mm (In air) at tele,
- Flange Back Length : -2.375mm (In air)

TCAM-530 Specifications

Specification & Design are subject to change without prior notice.

Section		Specification
Network	Network Interface	Ethernet 10/100Base-T (RJ-45)
	Network Protocol	TCP/IP, UDP, Multicast, DHCP, SMTP, HTTP, SNMP, RTP, RTSP
Camera	Image Sensor	1/2.5" CMOS Image sensor
	Lens	1/3.6", f=4.5~45.0mm F1.8~2.2 x10 optical zoom and x10 digital zoom
	Max. aperture Ratio	1:1.8
	Motion Image Stabilizer	On/Off
	Back Light compensation	On/Off
	Filp	Vertical Flip, Horizontal Flip
	Exposure	Flickerless, Metering, Mode, Apertue, Shutter Speed, Brightness
	Focus	Focus Range, Zoom Tracking
	White Balance Index	Auto, Indoor, Outdoor
	Image Quality	Sharpness, DNR, Chroma CR, Chroma CB, Hue CR, Hue CB
Motion Detection	On/Off	
Video	Standards	Main Stream: H.264 Secondary Stream: H.264
	Output	1 x HDMI type A, HDMI TX
	Resolution	1920x1080/60i ~ 352x240/30fps, 18 resolution steps
	Frame Rate Range	1 ~ 30fps
	bit rate	32Kbps ~ 8Mbps
Audio	Algorithm	G.711
	Input	1 x Line-In (Mini-stereo, Single Mono)
	Output	1 x Line-Out (Mini-stereo, Single Mono)
	Sample Rate	8KHz
	bit rate	64Kbps
Serial Port	Sensor Input	1 x RS-485
	Data Rate	2,400bps ~ 115,200bps
Sensor/Alarm/etc	Sensor Input	1 x NO Contact
	Alarm Output	1 x NO Contact
	Reset Button	1 x Factory Reset Button
User Interface	System Status	LED
Software	True CMS/Web Viewer	Live Monitoring, Recording, Search & Playback, Backup
Physical	Dimension	133.1(W) X 64.5(D) X 69.5(H)mm
	Weight	512g (Including x10 zoom lens)
	Power Source	DC 12V/0.5A, PoE(Power over Ethernet): 802.3af
	Power Consumption	Max 6W
	Operating Temp.	-10°C ~ 50°C / 14°F ~ 122°F